

All over the world first company for Cordless exquisite household tools and cordless outdoor camping equipment tools

RTK MACHINE SYSTEM

☎️ 0086-15968007065  
0086-0574-28801022  
NINGBO KINGSON TOOLS CO., LTD



Wechat



www.hangtalktools.com

Fax:0086-0574-87817257 Email:info@hangtalktools.com  
Add:No.2 Yuetong Town , Jishigang ,haishu District Ningbo, Zhejiang, China

RTK MACHINE SYSTEM

**HANGTALK**<sup>®</sup>  
Lithium battery tool manufacturer

**ROBOT**  
RTK MACHINE SYSTEM

RTK MACHINE SYSTEM

**2021**

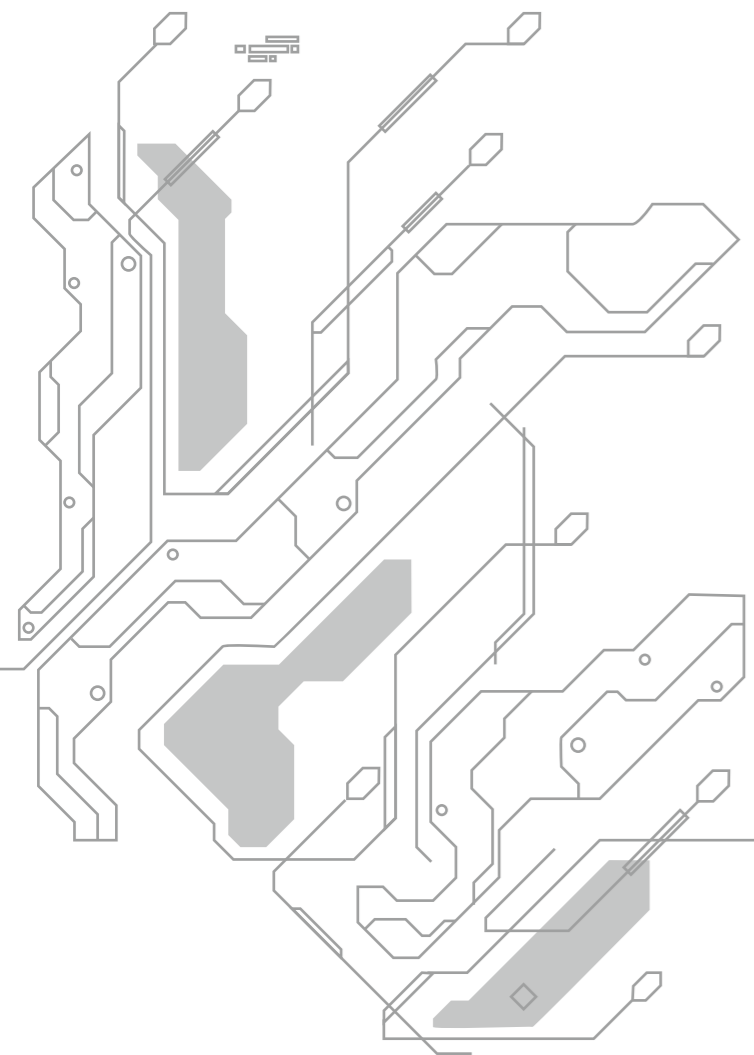
RTK MACHINE SYSTEM

## R1 ROBOT LAWN MOWER



### PARAMETER

Battery	20V lithium 2A battery
Charger	1A
Average Charging Time	50 min.
Cutting Motor	Brushless
Driving Motor	Brushless
Working Time	≈60 min.
Blade Speed	2900 rpm
Cutting Width	16cm
Cutting Height	20-45mm
Max. Working Area	600 m <sup>2</sup> )
Slope Max	Up to 27°)
Max Driving Speed	0.4 m/s
Cutting Blade	3 pcs
Standard Boundry line Length	100 m (328 ft)
Standard Quantity Of Nails	wire one 15 pcs
Noise	60 dB (A)
Protection	IP56
Pack Size	58 x 45.8 x 27 cm
Net Weight	16.80 kg
20/40/40hq W/O Shelter	360/750/880pcs



### PARAMETER

Battery	20V lithium 4A battery
Charger	1A
Average Charging Time	50 min.
Cutting Motor	Brushless
Driving Motor	Brushless
Working Time	≈100 min.
Blade Speed	4200 rpm
Cutting Width	22cm
Cutting Height	25-65mm
Max. Working Area	1000 m <sup>2</sup> )
Slope Max	Up to 30°)
Max Driving Speed	0.5 m/s
Cutting Blade	3 pcs
Standard Boundry line Length	Anywhere
User interface	App+bluetooth
Noise	60 dB (A)
Protection	IP56
Pack Size	69*53 x 30 cm
Net Weight	9 kg
20/40/40hq W/O Shelter	250/520/600pcs

## R2 ROBOT LAWN MOWER



分体式 RTK 设计  
自主导航技术



### R3 ROBOT LAWN MOWER

#### PARAMETER

SIZE	525*370*250
Weight	9.4kgs
Connect	Bluetooth , wifi , 4G
Working time	129minis
Navigation method	RTK+IMU ( borderless model)
Planning type	global planning GPS +pin

- 卫星定位导航
- 蓝牙WIFI连接
- GPS定位防丢失
- 雨水传感器
- 亏电自动回充
- 最大坡度20度
- IPX5防水
- 路径规划 有序切割
- APP 操作
- 最大割草面积 2000 平
- 切割方向自定义
- 作业断点续割

可调节刀片



20-60mm  
割草高度可调节

### 分体式 RTK 设计

自主导航技术采用 RTK  
实时动态导航



安全且精准避障



# ROBOT 2027

RTK MACHINE SYSTEM



2027

RTK MACHINE SYSTEM

ROBOT

## R4 ROBOT LAWN MOWER



### PARAMETER

Battery	20V lithium 4A battery
Charger	1A
Average Charging Time	50 min.
Cutting Motor	Brushless
Driving Motor	Brushless
Working Time	≈100 min.
Blade Speed	4200 rpm
Cutting Width	22cm
Cutting Height	25-65mm
Max. Working Area	600 m <sup>2</sup> )
Slope Max	Up to 30°)
Max Driving Speed	0.4 m/s
Cutting Blade	3 pcs
Standard Boundry line Length	ANYWHERE
User interface	Ai+App+bluetooth+wifi
Noise	60 dB (A)
Protection	IP56
Pack Size	79*45*22 cm
Net Weight	9 kg
20/40/40hq W/O Shelter	355/735/865pcs

### PARAMETER

Battery	20V lithium 8A battery
Charger	2A
Average Charging Time	120min.
Cutting Motor	Brushless
Driving Motor	Brushless
Working Time	≈200min.
Blade Speed	4200 rpm
Cutting Width	22cm
Cutting Height	25-65mm
Max. Working Area	5000 m <sup>2</sup> )
Slope Max	Up to 30°)
Max Driving Speed	0.5 m/s
Cutting Blade	6pcs
Standard Boundry line Length	anywhere
User interface	Ai+App+bluetooth+wifi
Noise	60 dB (A)
Protection	IP56
Pack Size	79*45*22 cm
Net Weight	9 kg
20/40/40hq W/O Shelter	355/735/865pcs

## R5 ROBOT LAWN MOWER



## R6 ROBOT LAWN MOWER



### PARAMETER

Battery	20V lithium 8A battery
Charger	2A
Average Charging Time	200 min.
Cutting Motor	Brushless
Driving Motor	Brushless
Working Time	≈200 min.
Blade Speed	6800 rpm
Cutting Width	45cm
Cutting Height	25-65mm
Max. Working Area	10000 m <sup>2</sup> )
Slope Max	Up to 30°)
Max Driving Speed	4wd - -3m/s
Cutting Blade	6 pcs
Standard Boundry line Length	Anywhere
User interface	2.0Ai+App+bluetooth+wifi
Noise	60 dB (A)
Protection	IP56
Pack Size	86*46*42 cm
Net Weight	9 kg
20/40/40hq W/O Shelter	105/220/260pcs

## R7 ROBOT LAWN MOWER



### PARAMETER

Battery	20V lithium10A battery
Charger	3A
Average Charging Time	200 min.
Cutting Motor	Brushless
Driving Motor	Brushless
Working Time	≈200 min.
Blade Speed	8600 rpm
Cutting Width	22cm
Cutting Height	25-65mm
Max. Working Area	1500 m <sup>2</sup> )
Slope Max	Up to 33°)
Max Driving Speed	2wd - -0.5m/s
Cutting Blade	3pcs
Standard Boundry line Length	Anywhere
User interface	Ai+App+bluetooth+wifi+NRTK+Binocular vstlam
Noise	60 dB (A)
Protection	IP56
Obstacle avoidance	300 degree caremas Height :>5cm
Cutting power	300W
Pack Size	86*46*42 cm
Net Weight	9 kg
20/40/40hq W/O Shelter	105/220/260pcs

## R9 RC LAWN MOWER



### PARAMETER

Vehicle Size	975*700*450mm(Grass bag not including) 1550*700*450mm(Grass bag including )
Machine Weight	70kg (Not including battery)
Navigation	RC controller /GPS-RTK
Power Batter	48V/20AH LI-BATTERY WEIGHT :10kg
Charging Time	90min
Working Hours	60-120min
Running Speed	0-6km/h
Cutting Torque	3.5Nm
Blade Type	Double-edged manganese steel blade
Cutterhead Rpm	3600rpm
Cutterhead Diameter	525mm
Mowing Height	20-100mm
Climbing Angle	≤30°

## R8 ROBOT LAWN MOWER

### PARAMETER

Battery	20V lithium10A battery
Charger	3A
Average Charging Time	200 min.
Cutting Motor	Brushless
Driving Motor	Brushless
Working Time	≈200 min.
Blade Speed	9300 rpm
Cutting Width	45cm
Cutting Height	25-65mm
Max. Working Area	10000 m <sup>2</sup> )
Slope Max	Up to 45°)
Max Driving Speed	4wd - -3m/s
Cutting Blade	6pcs
Standard Boundry line Length	Anywhere
User interface	2.0Ai+App+bluetooth+wifi+NRTK+Binocular vstlam
Noise	60 dB (A)
Protection	IP56
Obstacle avoidance	360 degree caremas Height :>6cm
Cutting power	300W
Pack Size	75*39*35cm
Net Weight	9 kg
20/40/40hq W/O Shelter	143/245/347pcs



## KE-17 ROBOT LAWN MOWER



### PARAMETER

Engine Power	16HP
Cutting length	1-120mm
Cutting width	800mm
Oil tank	6.5L
Fuel tank	1.5L
Star	Electricstar
Speed	50m/min
Working slope	0—33°
Length	155mm
RC distance	0-200m
power	1200W
Single motor power	800W
Size	990*1090*610mm
Weight	246kg
Working time	45min
Battery	12V 40AH
Motor	brushless motor

## KE-18 ROBOT LAWN MOWER



### PARAMETER

Engine Power	18HP 4 -stroke
Cutting Height	1-70mm
Cutting width	900mm
diesel oil tank	6.5L
Fuel tank	1.5L
Star	Electricstar
Speed	0-3km/h
Working slope	0—35°
Length	1560mm
RC distance	0-200m
Power	10KW
Max speed	3600RPM/min
Size	1620*1050*860mm
BALDE	48pcs

### PARAMETER

Engine Power	16HP
Cutting length	1-120mm
Cutting width	800mm
Oil tank	8L
Fuel tank	1.5L
Star	Electricstar
Speed	50m/min
Working slope	0—33°
Length	155mm
RC distance	0-200m
power	1200W
Single motor power	800W
Size	990*1090*610mm
Weight	246kg
Working time	45min
Battery	12V 40AH
Motor	brushless motor

## KE-19 RC LAWN MOWER



### PARAMETER

Engine Power	25HP B&S
Transmission to tracks	Hydraulic
Transmission to flail mower	Hydraulic
Max working angle in all directions	50°
Track Footprint	2*600mm
Track width	150mm
Total length basic unit	1.310mm
Total width basic unit	1.00
Total height basic unit	685mm
Weight basic unit	370kg
Mowing width flail mower	1000mm
Total length with flail mower	1970mm
Total width with flail mower	1.112mm
Number of Y-flails	36
Number of hammer flails	18
Pump Hans-TMP from Germany	
Motor and control system DANFOSS from USA	
Valve Youli from USA	

## KE-06 RC LAWN MOWER



## KEE-30 LAWN TRACTOR



### PARAMETER

Type	R13
Grass arrangement	Side row
Forward speed	11.2km/h
PTO clutch	Electronic clutch
Engine	XH22Power/Two cyinders
Chassis Lift	15 Gear,Knob Control
Astern Speed	5.6km/h
Rear Axle	Hydrostatic Hydraulic Rear Axle
Width	46inch/Two Blade
Drive Mode	Belt
Front Wheel Size	11 inch X 6inch
Packing Size	208X145X89cm
Height	2.5-10cm
Tank Capacity	13.2L*2
Rear Wheel Size	20inch X 8inch
N.W.	345kg

## KEE-26 LAWN TRACTOR



### PARAMETER

Weight(with battery)	205kg
A complete set weight	215kg
Engine power e	loncin452CC
Engine feature e	OHV
Engine	Loncin
Cutting size	98cm 38inch
Power	9.2KW
Warranty	machine:2 years engine:1 year
Cutting height	30-90mm/7positions
Cutting method	collecting,side discharge and rear catcher
Drive type	5 forward gear 1 backward gear
Transmission type	mechanical
Star system	electric star
Collector capacity	250L
Wheel(front/rear)	15/18 inch
Deck material	steel deck
Forward speed:8.88km/h 5 gear	Backward speed:4.5km/h 1 gear
Fuel capacity	6.0L
Tyres Front	15*6.00
Tyres Rear	18*8.5
Working area	4500m2

### PARAMETER

Type	R14
Grass arrangement	Side row
Forward speed	11.2km/h
PTO clutch	Electronic clutch
Engine	V-twin cylinder,Air cooled 4-stroke,OHV
Chassis Lift	15 Gear,Knob Control
Astern Speed	5.6km/h
Rear Axle	Hydrostatic Hydraulic Rear Axle
Width	54inch/Three Blade
Drive Mode	Belt
Front Wheel Size	13 inch X 6.5inch
Packing Size	210X150X130cm
Height	2.5-11.4cm
Displacement	803cc
Rear Wheel Size	20inch X 12inch
N.W.	345kg

## KEE-31 LAWN MOWER



### PARAMETER

Weight(with battery)	174kg
A complete set weight	184kg
Engine power e	13.5HP
Engine feature e	OHV
Engine	Briggs & stratton
Cutting size	980mm 38inch
Power	4.5KW
Warranty	machine:2 years engine:1 year
Turning radius	450mm(17.7inch)
Transmission type	mechanical
Star system	electric star
Wheel(front/rear)	15/18 inch
Deck material	steel deck
Forward speed:8.88km/h 5 gear	Backward speed:4.5km/h 1 gear
Fuel capacity	7.5L

## KEE-27 LAWN MOWER



PARAMETER

Size	1560*920*600
Engine Power	9HP
Cutting length	1-120mm
Cutting width	1-60cm
Oil tank	0.65L
Fuel tank	1L
Star	Electricstar
Speed	0-6km/h
Working slope	0-33°
Length	155mm
RC distance	0-150m
vpower	1500W
Single motor power	600W
Size	850mm*800mm*500mm
Weight	130kg
Working time	45min
Battery	12V 40AH
	80

RC controller



KE-12 RC LAWN MOWER



KEE-23 LAWN TRACTOR



PARAMETER

Weight(with battery)	120kg
A complete set weight	130kg
Engine power e	9HP 224CC
Engine feature e	OHV
Engine	Loncin
Cutting size	660mm 26inch
Power	4.5KW/2800rpm
Warranty	machine:2 years engine:1 year
Cutting height	35-75mm/5 positions
Cutting method	collecting,side discharge and mylching
Drive type	5 forward gear 1 backward gear
Transmission type	mechanical
Star system	electric star
Collector capacity	150L
Wheel(front/rear)	10/14inch
Forward Speed	1.5/2.0/4.0/6.0 km/h
Blade speed	3100RPM
Voltage	20V 2AH

PARAMETER

Weight(with battery)	275kg
A complete set weight	283kg
Engine power e	24HP 725CC
Engine feature e	OHV
Engine	KOHLER
Cutting size	1060mm 42inch
Power	4.5KW
Warranty	machine:2 years engine:1 year
Cutting height	25-90mm/5 positions
Cutting method	Mulch,side discharge and rear catcher
Drive type	5 forward gear 1 backward gear
Transmission type	mechanical
Star system	HYDROSTATIC
Collector capacity	280L
Wheel(front/rear)	15/18 inch
Deck material	steel deck
Forward speed:10km/h 5 gear backward speed:5km/h 1 gear	
Fuel capacity	10L

KEE-29 LAWN TRACTOR



PARAMETER

Engine Power	18HP Diesel oil
Cutting Height	1-70mm
Cutting width	900mm
diesel oil tank	6.5L
Fuel tank	1.5L
Star	Electricstar
Speed	0-3km/h
Working slope	0—35°
Length	1850mm
RC distance	0-200m
Power	10KW
Max speed	3600RPM/min
Size	1850*920*740mm
BALDE	60pcs
Engine power	9.2KW
Motor	48v800w
Battery	48V23A
Range extender generator	48V75A
Rotary tiller speed	24-32R/min
Rotary blade	20*3pcs
Rotary width	920mm
Rotary ditcher pcs	10pcs
Robot ditcher depth	200-300mm
Robot ditcher width	260mm
Lawn mower grass cutting width	800mm
Working area	>=1640m2/h
Working speed	25-45m/min
Fuel consumption	<=1.5L/H

KE-16 RC LAWN MOWER



## R21 AGRICULTURAL DRONE



### PARAMETER

FC system	K++/V7-AG
UNFOID SIZE	1000*1000*600mm
Folding size	620*620*600mm
Dynamic system	T10/X9
Texyure of material	Carbon fiber/Aluminum
Propeller	34inch
Wheelbase	1400mm
Sprying	8L pressure noztl
Pipe diameter	37*40mm
Rader number	3pcs
Weight	6.5kg
Battery	14s 18000mah
Volume	16L
Overall weight	36kg

## KE-23 ROBOT LAWN MOWER



### PARAMETER

Engine Power	22HP
Cutting length	1-120mm
Cutting width	900mm
Diesel oil tank	7L
Fuel tanl	1.5L
Star	Electricstar
Speed	0-3km/h
Working slope	0—50°
Length	1300mm
RC distance	0-200m
Power	1200W
Single motor power	1200W
Size	1560*920*680

### PARAMETER

FC system	K++/V7-AG
UNFOID SIZE	1140*1330*575mm
Folding size	620*620*600mm
Dynamic system	T10/X9
Texyure of material	Carbon fiber/Aluminum
Propeller	34inch
Wheelbase	1580mm
Sprying	8L pressure noztl
Pipe diameter	37*40mm
Rader number	3pcs
Weight	6.5kg
Battery	14s 18000mah
Volume	20L
Overall weight	42kg

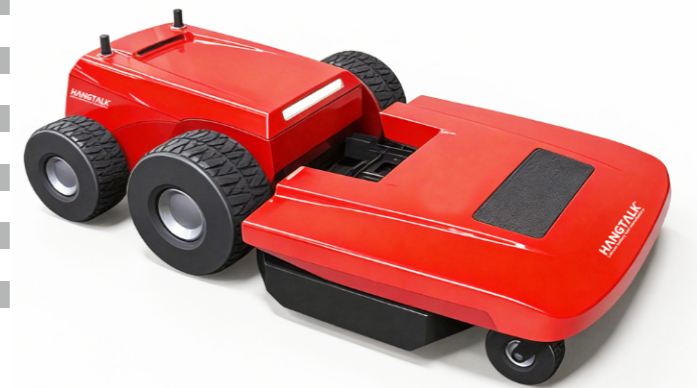
## R22 AGRICULTURAL DRONE



### PARAMETER

Control system	Automatic navigation/Remote control
Dimensions	2025D*1315W*540H mm
Battery capacity	8kW-h/16kW-h
Endurance	3h-6h
Cutting height	45mm-125mm
Blade power	3*1500W
Navigation system	RTK + AI Vision
Weight	290kg
Charging time	6h
Travel speed	0-5km/h
Cutting width	1200mm
Max slope	38 °

## KE-07 RC LAWN MOWER



# KE-08 ROBOT LAWN MOWER



## PARAMETER

Control system	Automatic navigation/Remote control
Dimensions	2025D*1315W*540H mm
Battery capacity	8kW-h/16kW-h
Endurance	3h-6h
Cutting height	45mm-125mm
Blade power	3*1500W
Navigation system	RTK + AI Vision
Weight	290kg
Charging time	6h
Travel speed	0-5km/h
Cutting width	1200mm
Max slope	38°



# ROBOT LAWN MOWER

## PARAMETER

Engineer	30HP /40HP/50HP/75HP Available
RPM	2400rpm
3-cylinder 4-stroke water-cooled direct injection diesel engine	
Only mower size	1400*800*560
weight	160kgs
Including mower weight	1400kgs
without mower weight	1240kgs
crawler width	250mm
Walking speed	>=10km/h
working speed	8-10km/h
Continus working time	>=5h
climbing	45 degree
Obstacle crossing ability	O>=200mm
Wading Depth	>=500mm
db	<=86db
working width	>=1.4m
Cutting wood	20-30-50-60cm
Only mower head hydraulic function	
Product mainbody without hydraulic function	

**KE-27**  
30HP

**KE-27-1**  
40HP

**KE-27-2**  
50HP

**KE-27-3**  
75HP



# ROBOT SNOW THROWER KE-01

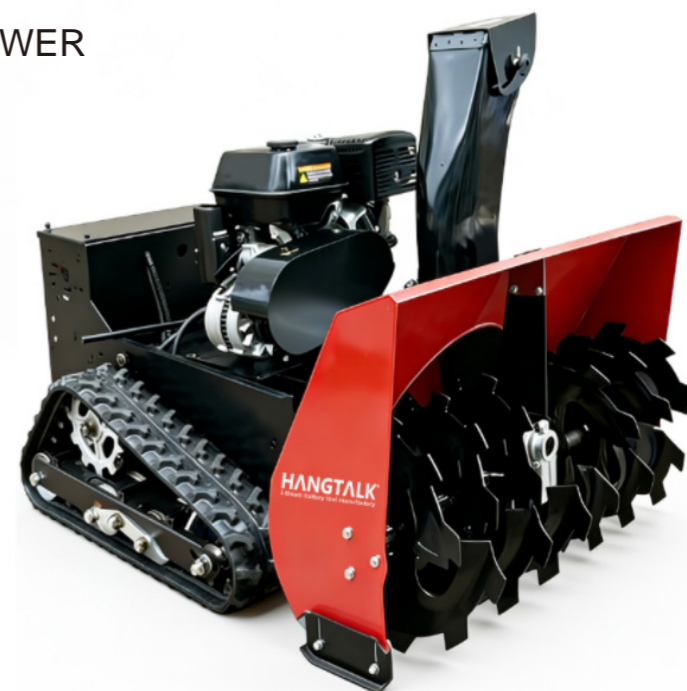
## PARAMETER

Weight(with battery)	220kg
A complete set weight	226kg
Engine power e	192CC
Engine feature e	OHV
Engine	Loncin
Snow removal width	560mm
Snow removal height	3--50cm
Warranty	machine:2 years engine:1 year
Fuel tank	5L
Power	9.8KW
Working slope	<=45degree
Start mode	Electric +RC+handle
Fuel consumption	1L/H
Rc distance	0-300m
Blade number	4pcs
Working area	2000M2
Battery	24V 20AH
Snow spraying head	1-3M

# KE-02 ROBOT SNOW THROWER

## PARAMETER

Weight(with battery)	278kg
A complete set weight	286kg
Engine power	420CC
Engine feature	OHV
Engine	Loncin
Snow removal width	1000mm
Snow removal height	3--50cm
Warranty	machine:2 years engine:1 year
Fuel tank	5L
Power	9.8KW-11KW
Working slope	<=45degree
Start mode	Electric +RC+handle
Fuel consumption	1L/H
Rc distance	0-300m
Blade number	4pcs
Power generantal capacity	
Working area	000M2
Battery	24V 20AH
Snow spraying head	1-5M



# KE-03 AGRICULTURAL POWER ROBOT

## PARAMETER

Rated voltage	322v
Rated Battery capacity (KW-H)	55.7
Rated battery capacity /Peak power (KW)	32/60
Dc charging capacity (KW)	55.7(MAX)
Dc output power (KW)	10KW
PTO(RPM)	1000mm
PTO Rated power(KW)	3--50cm
Warranty	machine:2 years engine:1 year
Rear Lift capacity (610mm) kg	1020kg
Category	I
Draft control	Electric
Circuit type	Open center
Implement pump flow (LPM)	40
Max rear remotes	4
Type	4WD
Limited slip differential	STAND
Front	8.3-20
Rear	300/70R20
Wheelbase (mm)	1900
Total length (mm)	3500
Overall width(mm)	1500(Max)
Total Height (mm)	2500
Ground clearance(mm)	350
Shipping weight (Kg)	2340
Beidou Rtk gnss	
Automatic homework	
360 degree surround View	
Laser rader	
HMI System	
Afs Autonomous homework	
Intelligent homework	
Pedestrian Recognition	
obstacle recognition	
Sound and light alarm system	
Real time homework progress	
Monitoring collisionprevention system	
100% pure electric	
100% digitail agile chassis	
1/3 of energy cost fordlessel tractorsLifetime maintenance	
Free power system	
oTA software upgrade	
Real time homework vedio	
agricultural machinery management systemhomework and cropinformation collectionDetailed homework report remote control system	

